



## Speck Pumps – BadustreamII



### Part Number

### Description

JS443-9412T-1C0



BADUJET TURBO PRO 1,500 GPM SWIM JET SYSTEM complete with Badu Connect communications board and Stainless Steel cover. The BaduJet Turbo Pro is the ultimate in resistance swimming. An intuitive new design allows for a more than three-fold increase in flow over our standard swimjets. Combined with simple underwater push button controls and a quiet, efficient variable speed motor, The BaduJet Turbo Pro takes your swim to the next level.

SS484-2400M-1SW

Two BaduStream II Jets



complete with one Speck Pump Model 21-80/33, 4HP, 208-230 Volts, 19A, 400 GPM @ 14 PSI and control box. The most powerful single pump jet system available providing the recreational swimmer with an intermediate level of exercise

SS484-1400M-1SW

One BaduStream II Jet

complete with one Speck Pump Model 21-80/33, 4HP, 208-230 Volts, 18.5A, 270 GPM @ 18 PSI and control box. For swimmers who prefer the economy of single jet operation. Minimum of 4" plumbing required

SS484-3400M-1SW

Three BaduStream II Jets

combined with two Speck Pump Model 21-80/33, 4HP, 208-230 Volts, 19A (each), 700 GPM @ 15 PSI and control box. The most powerful dual pump jet system available providing maximum resistance for the recreational swimmer.



JS421-5411F-100

BaduJet Imperial Swim System, 2 Jet 4HP

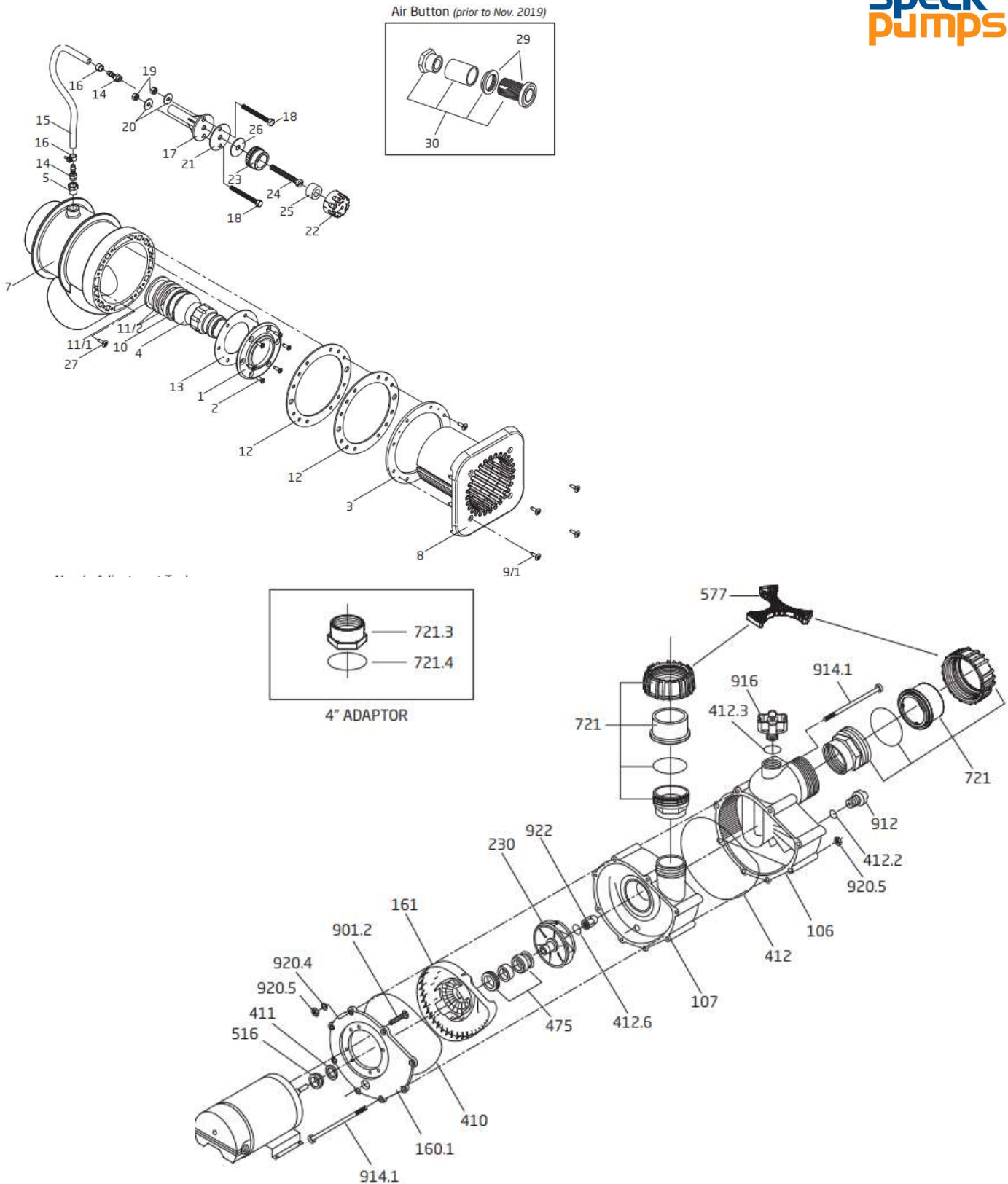
With Blue Led light, control box

Wi-Fi enabled





# Speck Pumps – Badustream Parts





## Speck Pumps - BadustreamII-Jet parts



<u>Part Number</u>	<u>Description</u>
2301001006	Y-SOCKET
2308002005	COVER PLATE - GUNITE BS
2308752006K	KIT - WINTER COVER - one per jet
2306002009	Drawing #1 FACE RING COVER
5879006020	Drawing#2 Face Ring SCREW K60 X 20mm
2308762004	Drawing#3 CLAMPING RINGS WITH INSERTS
2302002854	Drawing #4 NOZZLE 40MM ADJUSTABLE
2308761001	Drawing#7 HOUSING - BADUSTREAM II
2308750003	Drawing#8 SQUARE COVER - WHITE
2308750003B	Drawing #8 SQUARE COVER - BLACK
2308760004B	Drawing #8 ROUND COVER - BLACK
2308760004G	Drawing #8 ROUND COVER - GREY
5879650625	Drawing#8 SCREW M6 X 25 SS A4
5879650640	Drawing#8 SCREW M6 X 40 A4 PH FLT
2302002056	Drawing#10 SEAT-PLASTIC/POM
2302002057	Drawing #11/1 SPACER RUBBER 6.2mm
2302002157	Drawing #11/2 SPACER RUBBER 4mm
2308750005	Drawing#12 GASKET- 190 MM EPDM
2308750006	Drawing#12 BUTTERFLY GASKET
2306002013	Drawing #13 FACE RING GASKET
2301001005	Drawing#14 SOCKET-HOSE 1/4" PP
2301001007	Drawing#15 HOSE
2301001008	Drawing#16 HOSE CLAMP S14/9 A4 SS
2301001009	Drawing#17 HOLDER-AIR REGULATOR
2301001013	Drawing#21 GASKET
2301002000	Drawing# (22-26) AIR REGULATOR ASSY
2301002021	Drawing#22 AIR REGULATOR TOP-WHITE
2301002029	Drawing#22 AIR REGULATOR TOP - BLACK
2301002022	Drawing#23 AIR REG. BOTTOM - WHITE
2301002028	Drawing#23 AIR REG. BOTTOM - BLACK
7400000026	Drawing#29 AIR BUTTON #10 WHITE



## Speck Pumps – BadustreamII Pump parts



<u>Part Number</u>	<u>Description</u>
0817370201	MOTOR 4HP SF1.25 56PSC 208-230
0818102500	MOTOR 4HP SF1.25 56 230/460 3P
2088332025	21-80/33GS 4HP SF1.25 PUMP
2902041252	O-RING- FOR 4" PUMP UNION
2920280701	CONTROL BOX BJC-7
2920280712	CONTROL BOX BJC-7-P2
2923210620	Drawing#106 SUCTION HOUSING 21-80
2923210722	Drawing#107 DISCHARGE HSN. 21-80
2923116100	Drawing#161 HOUSING-SEAL 21-80
2923141010	Drawing#410 GASKET-SEAL HOUSING
2923141240	Drawing#411 SHAFT WASHER 14/22
2920343310	Drawing#475 SEAL-MECHANICAL 20mm
2923151601	Drawing#516 V-RING 18MM
2500200900	Drawing #721 ½ UNION PKG
2923190120	Drawing#901.2 SCREW
2923591200	Drawing#912 PLUG 1/4" 21-80 GS & BS
2922091600	Drawing#916 FILLER PLUG RED 3/4"
2923116010	Drawing#160.1 ALUMINUM FLANGE
2923223013	Drawing#230.6 IMPELLER 3HP SF 1.15
2923223014	Drawing#230.7 IMPELLER 4HP SF 1.25
2923223035	Drawing#230.8 IMPELLER 6 HP SF 1.0
2923541220	Drawing#412.2 O-RING- 12 x 2.5 mm
2923241231	Drawing#412.3 O-RING- 24 x 3.5 mm
2923541229	Drawing#412.6 O-RING 16.9 x 2.75 VITON
2500223433	Drawing#721.3 ADAPTOR- 2-3/4 x 3" NPT 4"OD unique to 21-80/GS prior to March 2008
2923241200	Drawing#912 O-RING- 210 x 4 mm
2923291000	Drawing#914.1 BOLT M6 X 170MM SS
2991400024	Drawing#920.4 WASHER-FLAT 1/4" USS
2923592200	Drawing#922 IMPELLER NUT-M12 CAP