





## Multiport Valve Cross Reference

	Tank	Style	OEM#	Atlantis #
<b>Hayward</b>  	GM-140,142,152	clamp on	SP0711-13	TM-12-H8
	S140T,S144T,164T,166T, S180T,190T,210T,220T,230T			
	244T,245T,270T	clamp on	SP0714T	TM-12-H8
		thread on	SP07122	TM-12-A
	S160T	thread on	SP07121	TM-12-B
	S270T2,S310T2, S360T2	clamp on	SP071620T	TM-22-H8
	S311SX, S311SXV, S360SX	1.5" side mount	SP0710X62	SM1-HPX62
		2" side mount	SP0715X62	SM2-HPX62
	S210S, S244S, S310S	1.5" side mount	SP0710X62	SM1-HPX62
		2" side mount	SP0715X62	SM2-HPX62
	S200,240	1.5" side mount	SPX0710X32	SM1-HP3
		2" side mount	SPX0715X32	SM2-HP3
	<b>Pentair</b>	TA-series prior 1991	screw on	
TA30,35,40,50,60		screw on		TM-12-PB
TA35D,40D,50D,60D		clamp on		TM12-CFC*
TA100, TA100D		Top Mount	261185	TM-22-PB
TR40, 50, 60		Side Mount	261173	SM1-PP3
TR-100,140,100C, 140C		side mount	261050	SM2-PP3
NS-24,36,FNS-24,36		side mount		SM1-PP2
FNS+24,36,48		side mount		SM1-PP21
NS-48,60,72, FNS-60,72		side mount		SM2-PP2
*TM-12-CFC has different port configuration than OEM valve				
<b>Jacuzzi</b>	SPLASH-prv.label	clamp on	Splash	TM-12-H8
	Laser,ST24	6 bolts bolt on	DVK-4, 6	TM-12-JL
	Laser II	clamp on	DKV-7	TM-12-H8
	Sand storm 31	clamp on	DVK-C7	TM-22-H8
	ST-27, ST-33	thread on	2VK27-33	TM-22-JAC
	30RMT, 36FP	8 bolts bolt on	42-1693-80	TM-22-E
	42SP. 48SP		4-1693-80	TM-22-E
			39251217	TM-22-H8
<b>Competition</b>				
<b>Jandy</b>	ST24-T, ST18-T	thread on	A0102200	TM-12-B
	SF30-T,32-T,36T	12 bolts bolt on	A0102300	TM-22-LA



## Multiport Valve Cross Reference

	Tank	Style	OEM#	Atlantis #
<b>Sta-Rite</b>  	Cristal-Flo	clamp on	WC112-148 A	TM-12-L
	Panterra	8-bolt flange	14962-0105	TM-12-E
	Panterra		24201-P17, 24203-P20, 24204-P24	TM-12-L
	Sable		24201-S075,S100, 24203-S075,S100,S150	TM-12-L
	Waterford sys.	clamp on	JSAL-01/03	TM-12-L
			JSAL-02-04	TM-12-L
	Panterra 24204-P24		14971-TM22L	TM-22-L
	S8D110, S7D75, S7S50	side mount	WC212-150PN	SM2-SR2
	S8S70 (systems 3 DE, sand)	side mount	WC212-144P, WC212-138B	SM2-SR2
	HRPB (sand filter) S7MD60, S7MD72 (systems 3 DE), PLDE36,PLDE46(DE)	Side Mount	18201-300	SM2-SR3U
<b>Waterco</b>	T450, 500, 600	thread on 12 bolts bolt on		TM-12-PB TM-22-LA
	<b>W.Cooper</b>	Rangers series	clamp on	TM-12-L
also private label		clamp on		TM-22-L
<b>American</b>	22" Eclipse, Meteor	clamp on	501131	TM-12-S
	26", 30" ECLIPSE	clamp on	501130	TM-12-S8
	30" ECLIPSE	clamp on	501231	TM-22-S8
<b>Poolco</b>		8 bolts bolt on clamp on		TM-12-E TM-12-L
	<b>Baker Hydro</b>	W3 909, 910, 922	screw on	
Baker II		clamp on	30B0056	TM-12-9BH



## Multiport Valve-Side Mount

## Multiport Valve-Side Mount



See Cross-  
Reference on  
pages 38 & 39



<u>Part Number</u>	<u>Description</u>	<u>List Price</u>
SM-10-2	1 1/2" PIPING VAR. 2 (FIP)	\$107.90
SM-10-3	1 1/2" PIPING VAR. 3(FIP)	\$107.90
SM-10-A0	1 1/2" ALL PORTS OPEN 1.5" FIP	\$112.79
SM-10-AOS	1 1/2" ALL PORTS OPEN (SOCKET)	\$107.90
SM1-HP2	SM-10-2 w HAYWARD PLUMBING (5" CENTER) 1.5" FIP	\$147.12
SM1-HP3	SM-10-3 w HAYWARD PLUMBING (5" CENTER) 1.5" FIP	\$147.12
SM1-HPX62	SM-10-3 w HAYWARD PLUMBING F.PRO SERIES (6" CENTER) 1.5" FIP	\$147.12
SM1-PP2	SM-10-2 w PAC FAB PLUMBING 1.5" FIP	\$147.12
SM1-PP21	SM-10-2 w PAC FAB PLUMBING 1/5" FIP-FNS 4800	\$147.12
SM1-PP3	SM-10-3 w PAC FAB PLUMBING 1.5" FIP	\$156.90
SM-20-2	2" PIPING VAR. 2 (FIP)	\$137.30
SM-20-3	2" PIPING VAR. 3 (FIP)	\$137.30
SM-20-AO	2" ALL PORTS OPEN 2" FIP	\$142.20
SM-20-AOS	2" ALL PORTS OPEN (SOCKET)	\$142.20
SM2-HP3	SM-20-3 w HAYWARD PLUMBING (5" CENTER) 2" FIP	\$210.87
SM2-HPX62	SM-20-3 w HAYWARD PLUMBING (5" CENTER) 2" FIP PRO SERIES 6" CNTR	\$210.87
SM2-HPXR50	SM-20-2 w HAYWARD PLUMBING (5" CENTER) 2" FIP	\$210.87
SM2-HPXR50S	SM-20-2 w HAYWARD PLUMBING (5" CENTER) 2" SKT	\$210.87
SM2-PP2	SM-20-2 w PAC FAB PLUMBING 2" FIP	\$210.87
SM2-PP3	SM-20-3 w PAC FAB PLUMBING 2" FIP	\$210.87
SM2-SR2	SM-20-2 w STA-RITE PLUMBING - 2" FIP BLACK	\$210.87
SM2-SR3U	SM-20-3 w STA RITE PLUMBING 2"FIP BLACK (DE)	\$294.24
SM2-WETAN	SM-20-2 w ANTHONY PLUMBING + UNIONS FIP	\$304.20
SM-30-AOB	3 inch ALL PORTS OPEN-Black 3 inch SLIP ONLY	\$1,122.02
UNK-1HAY	1 1/2" SPIGOT HALF UNION c/w O-RING	\$26.92
UNK-1TRITON	1 1/2" SPIGOT HALF UNION c/w O-RING	\$26.92
UNK-2HAY	2" SPIGOT HALF UNION c/w O-RING	\$26.92
UNK-2SR	2" SPIGOT HALF UNION c/w O-RING MACHINED 2"	\$30.77
UNK-2TRITON	2" SPIGOT HALF UNION c/w O-RING	\$26.92



See Cross-  
Reference on  
pages 38 & 39







## Multiport Valve-Top Mount

## Multiport Valve-Top Mount



See Cross-  
Reference on  
pages 38 & 39

### Part Number

### Description

### List Price

12L-CLP	TOP MOUNTED L STYLE FLANGE INCLUDING HARDWARE	\$17.20
39251217	6 POS. Multiport Valve 2"	\$196.54
TM-12-9BH	1 1/2" w 9" CLAMP FLANGE	\$127.50
TM-12-A	1 1/2" w 6" UNC THREAD	\$127.50
TM-12-B	1 1/2" w 6" BUTTRESS THREAD	\$127.50
TM-12-CFC	1 1/2" w 6.5" CLAMP FLANGE	\$127.50
TM-12-E	1 1/2" w BOLT DOWN 8 BOLTS	\$127.50
TM-12-H8	1 1/2" w 8" CLAMP FLANGE	\$127.50
TM-12-JL	1 1/2" w 6 BOLT DOWN LASER FILTER	\$127.50
TM-12-L	1 1/2" w 8.25" CLAMP FLANGE	\$127.50
TM-12-PB	1 1/2" w 5.98" BUTTRESS THREAD	\$127.50
TM-12-S	1 1/2" w CLAMP DOWN 7.5" CLAMP FLANGE	\$127.50
TM-12-S8	1 1/2" w CLAMP DOWN 8.22" CLAMP FLANGE	\$127.50
TM-22-E	2" w BOLT DOWN 8 BOLTS	\$176.54
TM-22-H8	2" w 8" CLAMP FLANGE	\$176.54
TM-22-JAC	2" w 7 1/16" BUTTRESS THREAD	\$176.54
TM-22-L	2" w 8.22" CLAMP FLANGE	\$176.54
TM-22-PA	2" w 8.22" CLAMP FLANGE	\$176.54
TM-22-PB	2" w 8.22" CLAMP FLANGE	\$176.54



See Cross-  
Reference on  
pages 38 & 39

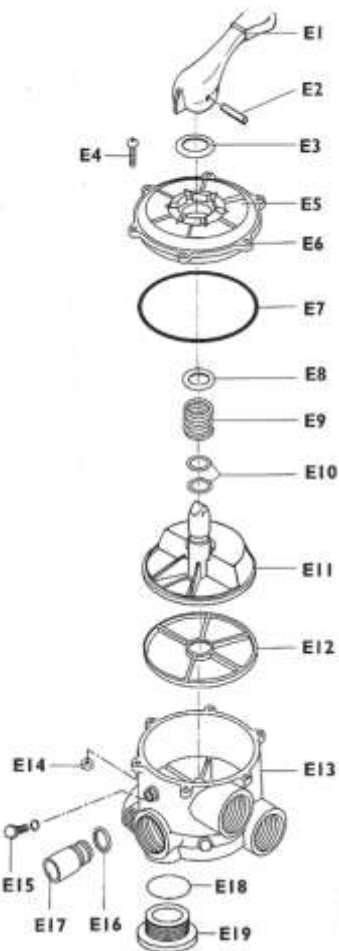




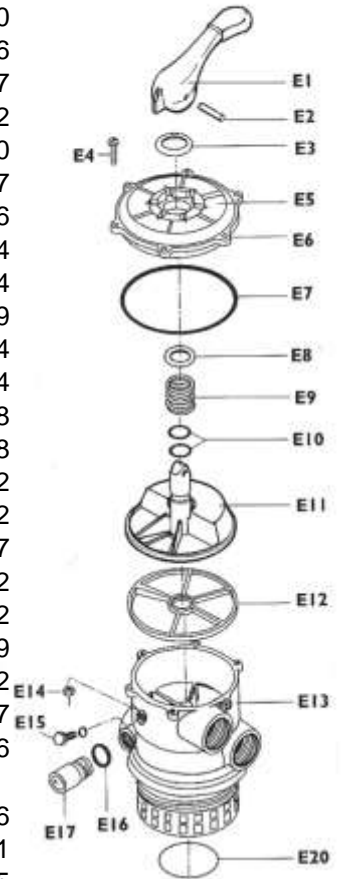
## Multiport Valve-Top & Sidemount Parts

<u>Part Number</u>	<u>Description</u>	<u>List Price</u>
TM-12-KIT	Gasket and washer rebuild kit for TM-12 1-1/2" Multiport Valves	\$49.80
TM-22-KIT	Gasket and washer rebuild kit for TM-22 or SM-22 2" Multiport Valves	\$49.80
E-1-S1	HANDLE ABS BLACK FOR 1 1/2" & 2"	\$6.70
E-1-S3	HANDLE ABS BLACK FOR 3"	\$77.10
E-2-S1	PIN (SS 304) FOR 1 1/2" & 2"	\$2.86
E-2-S3	PIN (SS 304) FOR 3 inch	\$9.57
E-3-S1	WASHER (POM) FOR 1 1/2" & 2"	\$1.92
14426407	E3 Washer Competition	\$2.10
E-3-S3	WASHER (POM) FOR 3 inch	\$9.57
E-4-S1	SCREW M6 (SS 304) FOR ALL	\$0.96
E-5-S1	DECAL FOR 1 1/2" Side Mount	\$5.74
E-5-S2	DECAL FOR 2" Side Mount	\$5.74
E-5-S3	DECAL FOR 3 inch	\$26.79
E-5-T1	DECAL FOR 1 1/2" Top Mount	\$5.74
E-5-T2	DECAL FOR 2" Top Mount	\$5.74
E-6-S1	COVER ABS (WHITE) FOR 1 1/2"	\$11.48
E-6-S1B	COVER ABS (BLACK) FOR 1 1/2"	\$11.48
E-6-S2	COVER ABS (WHITE) FOR 2"	\$17.22
E-6-S2B	COVER ABS (BLACK) FOR 2"	\$17.22
E-6-S3	COVER ABS (WHITE) FOR 3 inch	\$191.37
E-7-S1	#252 O-RING - COVER OF 1 1/2"	\$3.82
E-7-S2	#172X4 O-RING - COVER OF 2"	\$3.82
E-7-S3	#250X6 O-RING - COVER OF 3 inch	\$26.79
E-8-S1	WASHER (POM) FOR 1 1/2" & 2"	\$1.92
E-8-S3	WASHER (POM) FOR 3 inch	\$9.57
14426407R	Nylon Washer for 2" Multiport valve Competition	\$2.06
14426605	E-8 Washer Nylon for Multiport Valve	\$2.06
E-9-S1	SPRING (SS 304) FOR 1 1/2" & 2"	\$8.61
E-9-S3	SPRING (SS 304) FOR 3 inch	\$47.85
16109209	Spring for 1.5" or 2" Multiport Dial Valve - Competition	\$9.10
E-10-S1	#212 O-RING FOR DIVERTER ON 1 1/2" & 2"	\$1.92
E-10-S3	#215 O-RING FOR DIVERTER ON 3 inch	\$28.64
E-11-S1	DIVERTER (NORYL) FOR 1 1/2"	\$15.30
E-11-S2	DIVERTER (NORYL) FOR 2"	\$17.22
140-561	DIVERTER (NORYL) FOR 3" w/molded gasket	\$184.01
E-12-S1	SPIDER GASKET FOR 1 1/2"	\$6.70
E-12-S2	SPIDER GASKET FOR 2"	\$8.62
E-12-S3	SPIDER GASKET FOR 3 inch	\$66.98
13107404	2" Spider Gasket for multiport valve	\$8.90

Side Mount  
Multiport Valve

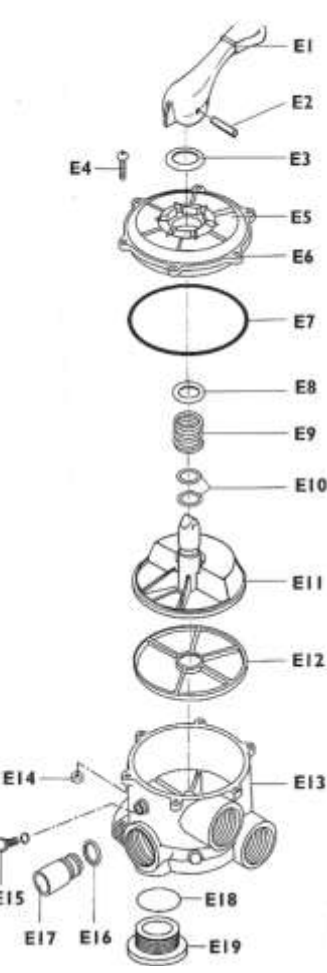
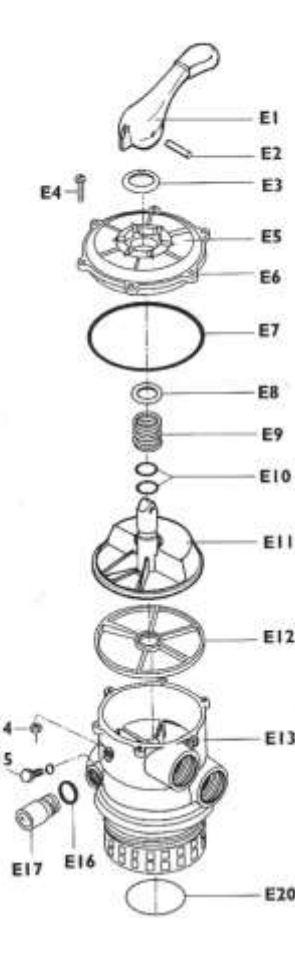


Top Mount  
Multiport Valve





## Multiport Valve-Top & Sidemount Parts

	<u>Part Number</u>	<u>Description</u>	<u>List Price</u>	
<b>Side Mount Multiport Valve</b>  	13130505	Star gasket Kraton for 1.5" Dial valve - Competition	\$7.10	<b>Top Mount Multiport Valve</b>  
	E-13-S1	VALVE BODY 1 1/2" NPT (SM-10-AO)	\$34.45	
	E-13-S2	VALVE BODY 2" NPT (SM-20-AO IN WHITE)	\$49.76	
	E-13-S2B	VALVE BODY 2" NPT (SM-20-AO IN BLACK)	\$49.76	
	E-14-S1	NUT M6 (SS 304)	\$0.48	
	E-15-S1	1/4" ABS PLUG (WHITE)	\$0.96	
	E-16-S1	SIGHT GLASS GASKET	\$1.04	
	E-17-S1	SIGHT GLASS (LEXAN)	\$2.86	
	E-18-S1	O-RING FOR 1 1/2" AO threaded plug	\$0.96	
	E-18-S2	O-RING FOR 2" AO threaded plug	\$0.96	
	E-18-256	#256 O-RING TM-12-A & TM-12-B	\$5.20	
	E-18-442	#442 O-RING TM-12-L AND TM-22-L	\$5.20	
	E-19-S1	AO threaded plug-white 1 1/2"	\$4.78	
	E-19-S2	AO threaded plug-white 2"	\$5.74	
	E-19-S2B	AO threaded plug-black 2"	\$5.74	
	E-19-S2SB	AO spigot plug-black 2"	\$5.74	
	E-19-S3	AO spigot plug-white 3"	\$19.14	
	E-20-T1	#225 O-RING FOR STANDPIPE ON 1 1/2"	\$0.96	
	E-20-T2	#229 O-RING FOR STANDPIPE ON 2"	\$1.12	
	E-50-S1	KEY Assy. IN WHITE FOR 1 1/2"	\$66.98	
	E-50-S1B	KEY Assy. IN BLACK FOR 1 1/2"	\$66.98	
	E-50-S2	KEY Assy. IN WHITE FOR 2"	\$76.56	
	E-50-S2B	KEY Assy. IN BLACK FOR 2"	\$76.56	
	E-50-S3	KEY Assy. IN WHITE FOR 3 inch	\$612.40	
	E-55-S1HP2	BODY Assy. FOR SM1-HP2 IN WHITE	\$81.34	
	E-55-S1HP3	BODY Assy. FOR SM1-HP3 IN WHITE	\$81.34	
	E-55-S1PP2	BODY Assy. FOR SM1-PP2 IN WHITE	\$81.34	
E-55-S1PP3	BODY Assy. FOR SM1-PP3 IN WHITE	\$81.34		
E-55-S2PP2	BODY Assy. FOR SM2-PP2 IN WHITE	\$105.26		
E-55-S2PP3	BODY Assy. FOR SM2-PP3 IN WHITE	\$105.26		
E-55-SR2	BODY Assy. FOR SM2-SR2 IN BLACK	\$105.26		
E-55-T12A	BODY Assy. FOR TM-12-A - WHITE	\$66.98		
E-55-T12B	BODY Assy. FOR TM-12-B - BLACK	\$66.98		
E-55-T12BH9	BODY Assy. FOR TM-12-BH9 - BLACK	\$66.98		
E-55-T12CFC	BODY Assy. TM-12-CFC - BLACK	\$66.98		
E-55-T12E	BODY Assy. FOR TM-12-E - BLACK	\$66.98		
E-55-T12H8	BODY Assy. FOR TM-12-H8 - BLACK	\$66.98		
E-55-T12L	BODY Assy. FOR TM-12-L - BLACK	\$66.98		



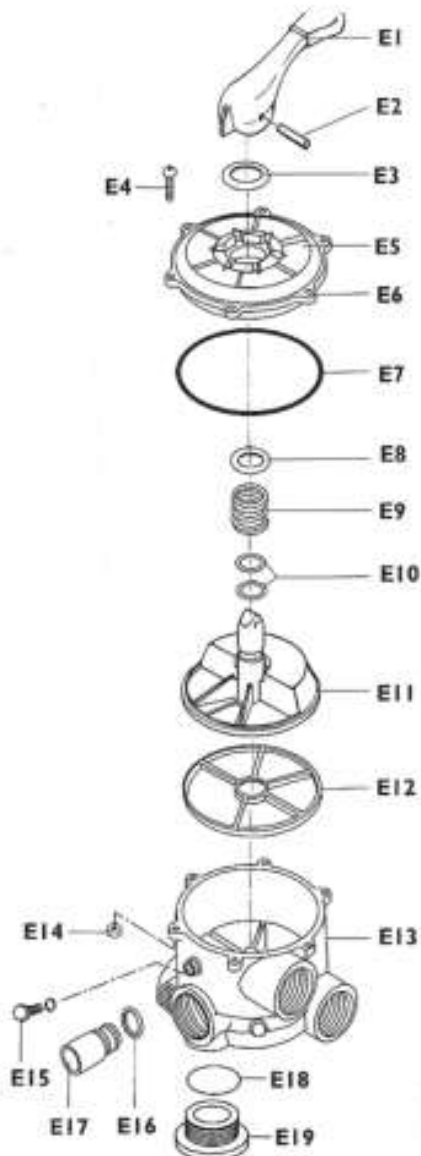
## Multiport Valve-Top & Sidemount Parts



<u>Part Number</u>	<u>Description</u>	<u>List Price</u>
E-55-T12P8	BODY Assy. FOR TM-12-P8 - BLACK	\$66.98
E-55-T12S	BODY Assy. FOR TM-12-S - BLACK	\$66.98
E-55-T12S8	BODY Assy. FOR TM-12-S8 - BLACK	\$66.98
E-55-T22E	BODY Assy. TM-22-E - BLACK	\$95.68
E-55-T22JAC	BODY Assy. TM-22-JAC - BLACK	\$95.68
E-55-T22L	BODY Assy. TM-22-L - BLACK	\$95.68
E-55-T22PA	BADY Assy. TM-22-PA - BLACK	\$95.68
E-55-T22PB	BODY Assy. TM-22-PB - BLACK	\$95.68



### Side Mount Multiport Valve



### Top Mount Multiport Valve

